

Tilden Park Mystery Rock Studied by Archeologists

Mysterious paleographics have been found on numerous boulders near Tilden Park, and a University of California expert says they're no doubt the work of a neolithic mind.

"However," adds Dr. Robert F. Heizer, vice chairman of U.C.'s Department of Anthropology, "they were most certainly put there by a 19th or 20th Century Caucasian."

The strange symbols, first discovered by Daryl C. Sweeney, 18, a U.C. junior and son of Mr. and Mrs. Charles Sweeney of 129 Ramona Ave., El Cerrito, were examined by Heizer and two members of the University's archaeological survey team yesterday.

The rock writings are the second group to be discovered in the Regional park, Heizer said, although by no means the second to be found in the Bay area.

'ODD ETCHINGS'

"We have been called to many locations where the odd etchings have been found on the face large rocks," Heizer declared.

Most have been discovered in the nine Bay counties, with a few reported in the northern counties, he added.

The markings examined yesterday were found by Sweeney while exploring a steep hillside between Claremont Ave. and Grizzly Peak Blvd., about a mile south of the Army's 752nd Headquarters Company base.

LICHEN GROWTHS

Heizer, together with A. B. Elsasser, a research archaeologist, and Pierre Agrinier, a senior anthropology student, examine the numerous hieroglyphics ar-

noted that the markings were covered with growths of lichen.

"They were probably chiseled out 30 to 80 years ago," Heizer declared.

"Who knows what they mean?" he added. "We have determined on past occasions that certain modern religious and pseudo-scientific cults carry on this type of thing."

SIMILAR SYMBOLS

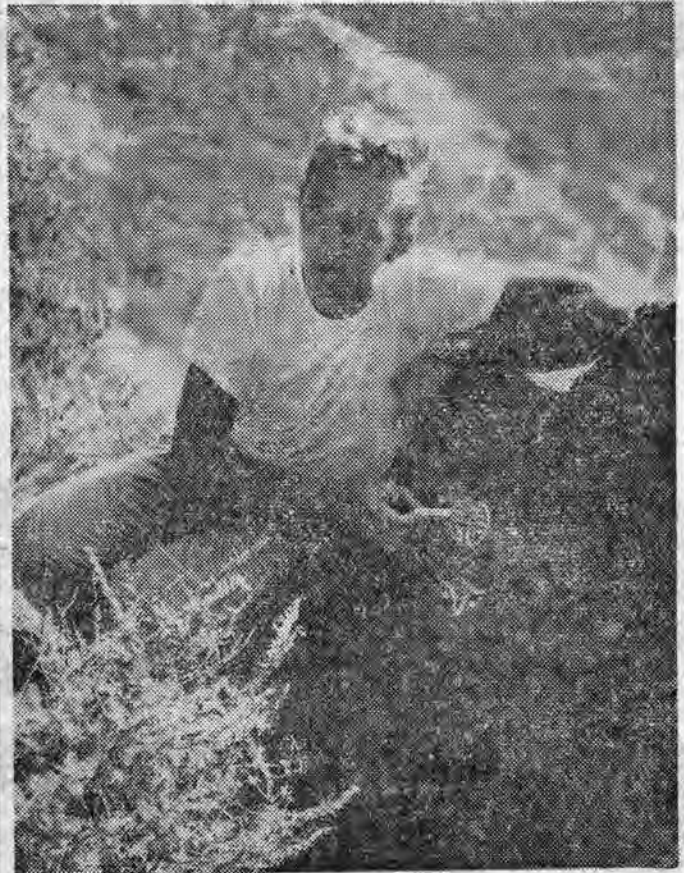
Elsasser noted that similar symbols were found earlier this year on a rocky point near Rockville on Highway 40, about 15 miles north of Vallejo.

"In 1950 a citizen called us out to examine some that looked very much like these. They were carved into rock on the hill in back of the Claremont Hotel," Elsasser continued.

"We like to get these reports, regardless of how we determine their origin," Heizer pointed out.

The university has accumulated a rather extensive record of the markings.

ANCIENT ... MODERN?



Tribune photo

The paleographics, or rock writings, shown here were discovered by Daryl Sweeney, a University of California student, near Tilden Regional Park.